

# CRITICAL INSTRUCTIONS

Application: Citroen/Peugeot 2.0HDi

Part Number:

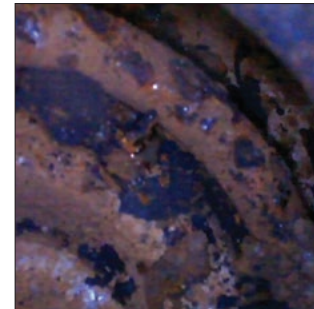
756047-5005S

756047-0005E

WHEN FITTING THIS TURBO, IT IS **CRITICAL** THE FOLLOWING INSTRUCTIONS ARE ADHERED TO:

- **To stop water ingress into the actuator/position sensor, it is essential that the following checks are carried out:**

1. Inspect turbo control solenoid valve (Part Number 1618C9) for correct operation.  
and signs of water ingress – replace as required.
2. Inspect condition and connections of vacuum pipework between control solenoid valve and turbocharger – replace as required.
3. Ensure soundproof scuttle trim is secured correctly.



BTN will not be liable for the failure of the turbocharger due to damage by external elements including water penetration into the actuator.

Any questions regarding the above should be directed to the supplier of this unit before commencing any work

